



# ETAWA

English Teachers Association  
Western Australia

# MARKING METHODS STUDY - INFO SHEET

## What does my participation involve?

### Introduction

You are invited to take part in the ETAWA Marking Methods Study research project. You have been invited because your school has agreed to collaborate on this project with the English Teachers Association of Western Australia.

This information sheet tells you about the research project and explains the processes involved with taking part. Knowing what is involved will help you decide if you want to take part in the research.

Please read this information carefully.

Participation in this research is voluntary. If you don't wish to take part, you don't have to.

If you decide you want to take part in the research project, you will be asked to sign the consent section. By signing it you are telling us that you:

- Understand what you have read
- Consent to your work being copied and included in the teacher trial marking materials and subsequent professional development materials.

### What is the purpose of this research?

This research aims to improve the standard and integrity of marking in subject English in Western Australia. The marking of tasks in English-related courses is often contended, with questions of objectivity, parity and agreeable standards. This project seeks to test different marking methods, through academic research and trial marking studies, to arrive at recommendations of the most appropriate methods for individual task circumstances. The project will also develop a series of Professional Learning resources for teacher development.





# ETAWA

English Teachers Association  
Western Australia

# MARKING METHODS STUDY - INFO SHEET

## What does participation in this research involve?

Participation in this project will occur in different ways. Schools will contribute samples of their marking keys, teachers will be involved through surveys of current marking practice and preference, as well as trial marking sessions. You are being asked to contribute by agreeing for your work to be copied and supplied to the project. This will be work already completed as part of your English course for the year. The sample is not an additional piece of work for you. The work will also be de-identified, meaning your name and school name will be removed.

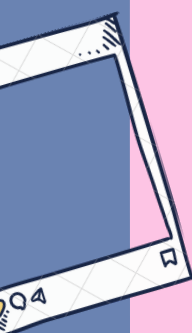


## Other relevant information about the research project

The initial stages of the investigation are under way through the researchers of The Big Picture Project, our partners at the University of Western Australia.


As the study relates to subject English, the project will look to national and global comparisons of marking and measurement methods for secondary English-related courses. This comparison will consider the marking methods used interstate and internationally in comparable English education settings, and it will also take into account tertiary comparisons. In addition, the project hopes to explore the student performance data and marking reconciliation figures across all areas of secondary English. The project will look to provide guidance and practical applications for teachers of all levels of secondary English for various assessment forms.

Finally, the project will conduct a large-scale marking trial, led by a marking study coordinator, using classroom teachers to test various marking methods. The data from this trial will be used to make recommendations to WA teachers, and the wider education community, about accurate and reliable methods of marking. The culmination of this work will be a Professional Learning module for teachers on marking methods.




# MARKING METHODS STUDY - INFO SHEET

## Do I have to take part in this research project?




Participation in any research project is voluntary. If you do not wish to take part, you do not have to. If you decide to take part and later change your mind, you are free to withdraw from the project at any stage.

Your decision whether to take part or not to take part, or to take part and then withdraw, will not affect your academic outcomes in any way.




## What are the possible benefits of taking part?


This project does not offer any direct financial or academic benefit for students who consent to their work being included. The benefit of taking part in this project is that you will be contributing to research to improve the standard and equity of marking in English throughout Western Australia. As your school is collaborating with the project, you can expect this to inform your teachers' marking practices.



## What if I withdraw from this research project?



If you do consent to participate, you may withdraw at any time. If you decide to withdraw from the project, please notify the English Teachers Association of WA via email at [markingstudy@etawa.org.au](mailto:markingstudy@etawa.org.au).



## What happens when the research project ends?

The project will deliver findings of the stages of the project throughout 2022 and 2023, with the complete findings delivered in July 2023, along with a Professional Learning package for English teachers. All student contributions will be archived with project materials.